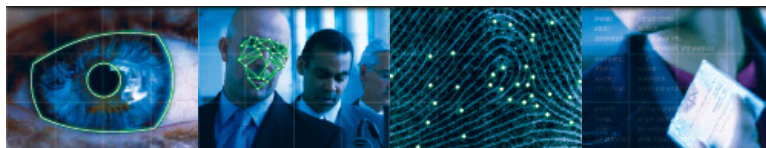


You've known us as L-1 Identity Solutions—now we are **MorphoTrust USA™**. [Click here](#) to be redirected to our new website.

[COMPANY](#) [INVESTOR RELATIONS](#) [NEWS & EVENTS](#) [CAREERS](#) [CONTACT US](#)



Protecting and Securing Personal Identities and Assets

[MARKETS](#) [SOLUTIONS](#) [ENROLLMENT SERVICES](#) [GOVERNMENT CONSULTING](#) [SUPPORT](#) [PARTNERS](#)

**BIOMETRICS**

Introduction

Civilian Identification Management

Criminal Identification Management

Mobile ID For Military

■ [HIIDE™ Series 4](#)

■ [HIIDE™ 5](#)

■ [PIER-T™](#)

■ [IBIS Extreme](#)

Mobile ID For Law Enforcement

**SECURE CREDENTIALING  
ENTERPRISE ACCESS**

**HIIDE™ 5**

**Setting a new standard for high volume mobile ID in remote environments; integrates with U.S. and Non-U.S. database systems.**

The newest introduction to the HIIDE family of products, HIIDE 5 has optimized functionality for high-volume remote enrollments and integrates with U.S. and non-U.S. database systems. It is self-contained and man-portable; a “hasty enrollment” device offering a smaller and lighter alternative to protective Pelican cases. Other features include:

- Compact unit weighing only 3.1 pounds and easily fitting into a cargo pocket for optimal portability.
- Full-quality optical sensor for single or two finger flat and roll fingerprint capture, the only optical sensor FBI-approved for enrollments.
- Simultaneous dual iris capture, a full-function camera for face capture, and built-in image quality checks are standard.
- GPS and wireless transmission capabilities support 802.11, 3G/4G cellular, WiFi, Tactical Radio and WiMax.
- Highest onboard storage capacity in the industry, accommodating storage for up to 500,000 biometric portfolios, or over one million identities.
- Smallest form factor device, coupled with significant usability enhancements, simplifies and speeds the mission.
- Top-rated iris and face algorithms ensure fast and accurate matching.
- Added levels of encryption and tamper protection enhance security.

**Only Device of Its Kind to Generate Native Iris, Finger and Face Templates Onboard**

Along with a new middleware application, the HIIDE 5 is capable of generating onboard templates for iris, fingerprint, and facial images that are identical to those used in various authoritative databases, including the Department of Defense (DoD) Automated Biometric Identification System (ABIS). It is the only device of its kind with this capability.

The templates are approximately one-tenth the size of standard image file formats used by other systems, reducing bandwidth requirements and speeding transmission times.



**HIIDE 5 is Customizable and Complementary**

- Customizable to fit a wide range of military missions, homeland security uses, law enforcement and transportation security programs
- Complements **HIIDE 4™**, the most widely deployed multi-modal device with defense agencies

**Reducing Critical Time On Point when the War Fighter is Most Vulnerable**

Low bandwidth communications and immature networks are among the many challenges of operations in remote environments. This makes it a must to have a system that is easy to use, has maximum functionality and that delivers exceptionally fast transmissions to and from the central database. With it, troops can quickly ascertain if a subject is a match to an identity already in the system and proceed accordingly, significantly reducing the critical time when the war fighter is on point and most vulnerable.

**Related Products**

- [HIIDE 4™](#)
- [ABIS® System Search Engine](#)

**Support & Information**

- [Request More Information](#)
- [Product Support](#)

**Collateral Downloads**

- [HIIDE™ 5](#)

